

XW-LS05 Series

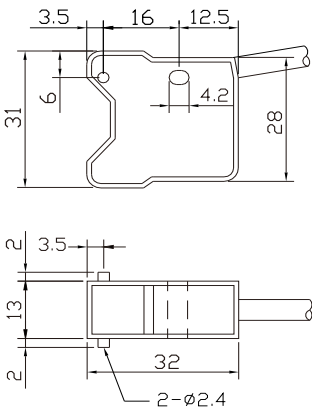
- Tiny designed with built-in amplifier, able to detect transparent object.
- Distance of detected objects can be setting and activated precisely without influence by color and material.
- With Light ON and Dark ON two system.



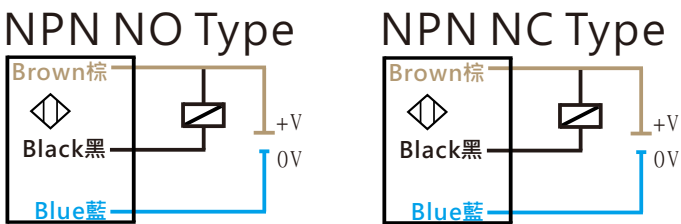
Item	Specifications	
Model number	XW-LS05NE1	XW-LS05NE2
Sensing method	Convergent-reflective	
Sensing distance	45mm	
Switching output	NPN NO	NPN NC
Standard sensing object	White Paper 50x50mm	
Operating voltage	DC 12~24V±10%	
Response time	<5ms	
Load current	<200mA	
Light source	Infrared LED	
Operation indicator	Red LED	
Circuits protection	Reversed polarity & Short circuit protection	
Enclosure protection	IEC IP67	
Ambient temperature & humidity range	Operating : -20 ~ 55℃ / RH 35 ~85% (with no icing or condensation)	

Ambient illumination	Lamplight<3000 Lux / Sunlight<10000 Lux
Housing material	Case : ABS / Lens : Acrylic
Connecting method	Pre-wired 2M Cable
Accessories	Mounting bracket 、Screws

Dimension



Wiring Diagram



#Design and specifications are subject to change without prior notice.